

# **BrightSign®** **UPGRADE GUIDE**

BrightSign Network Enterprise Edition 4.2

# TABLE OF CONTENTS

Introduction .....	1
What's New in BSNEE 4.2?.....	1
Minimum Hardware Requirements.....	1
Recommended Hardware Requirements.....	2
Minimum Software Requirements .....	2
Recommended Software Requirements .....	2
BrightSign Software Requirements.....	2
Pre-Installation .....	4
Installation.....	5
Prerequisites .....	5
Customized Files .....	6
Database Server .....	7
Backup Database .....	7
Bindings Configuration .....	8
Account Settings .....	9
Post-Installation.....	10
Configuring BrightAuthor .....	10



# INTRODUCTION

This manual will guide you through the process of upgrading your BSNEE services to version 4.2. Note that you can only use the 4.2 Upgrade Installer to upgrade from BSNEE version 4.1. BSNEE 4.1 installations that were upgraded using a previous version of the Upgrade Installer are also supported.

The BSNEE upgrade installer can only upgrade standard BSNEE installs with standard database schema. However, BSNEE installs with customized WebUI files are supported.

## What's New in BSNEE 4.2?

The following features and improvements have been implemented since the previous version of BSNEE (4.1):

- **Player Tagging:** You can now add tags to players in the **Current Usage** tab of the WebUI. This allows you to search players on your BSN account using an unlimited number of customizable criteria.
- **New HTML Uploader:** The WebUI no longer requires Microsoft Silverlight to upload files.
  - The upload destination is now determined by the folder currently selected in the **Library** side bar (previously, all files would be placed in the **Incoming** folder automatically).
  - Files are checked by name and hash value when uploaded, and users are given the option of skipping or re-uploading duplicate files.
  - The speed and stability of the uploader has improved.
- **Proxy Bypass:** You can use the **Manage** tab in BrightAuthor to edit Proxy Bypass settings on players (requires BrightAuthor 4.4.0.x or later).

## Minimum Hardware Requirements

- 1.4 GHz or faster Dual Core processor
- 2GB of RAM
- 6GB free hard disk space
- Network connection

**Note:**

- A minimum hardware configuration should be used for testing/evaluation purposes only.
- Device logs should be disabled with a minimum hardware configuration.
- A maximum of 50 networked devices is recommended with this configuration.

## Recommended Hardware Requirements

- 2.2 GHz or faster Quad Core processor (Intel Xeon is preferred)
- 16GB of RAM
- 50GB free hard disk space for Temporary Storage
- 1TB additional free hard disk space for Persistent Storage (high-performance RAID configuration is preferred)
- 1 Gbps network connection

**Note:**

- This hardware configuration is recommended for production use.
- A maximum of 500 networked devices is recommended with this configuration. If you want to increase the maximum amount of networked devices, note the following:
  - A more powerful CPU is required for operations stemming from the SQL server, Device Handlers node, and the Scheduler service.
  - More RAM is required for intensive processing of device logs (when all log types are enabled for every device), the SQL server, and the Scheduler service.
  - More free hard disk space is required for Persistent Storage and device log reports. Intensive operations may also be bottlenecked by the speed of the HDD.

## Minimum Software Requirements

- Windows Server 2008 R2 (x64, with IIS installed)
- MS SQL Server 2008 SP1, including Express edition
- .NET Framework 4.0 or later (4.5 recommended for full IE10/IE11 support)

## Recommended Software Requirements

- Windows Server 2012 R2 (with IIS installed)
- MS SQL Server 2012 SP1 or later, including Express edition
- .NET Framework 4.5 or later

## BrightSign Software Requirements

- Target BrightAuthor version: **4.4.0.x**
- Minimum required BrightAuthor version: **3.5.0.34**

- Minimum player firmware version:

<b>Device Family</b>	<b>Minimum Firmware</b>
4K242, 4K1042, 4K1142	5.1.16
XD232, XD1032, XD1132	5.1.24
HD222, HD1022	5.1.16
LS322, LS422	5.1.16
XD230, XD1030, XD1230	4.4.44
HD220, HD1020, AU320	4.4.44
HD210w, HD1010(w), TD1012	3.10.22

# PRE-INSTALLATION

Complete these steps before running the BSNEE Upgrade Installer:

1. If your BSNEE 4.1 instance was upgraded from version 4.0 (i.e. BSNEE 4.1 was not a fresh install), do the following:
  - a. Navigate to the %TEMP% directory for your user account:  
`C:\Users\{username}\AppData\Local\Temp\`
  - b. Delete all files in the %TEMP% directory.  
**Note:** *If you're using RDP, Windows may resolve you to a subfolder of the %TEMP% directory. Ensure that you delete all files from the %TEMP% directory itself.*
2. Stop the following BSNEE services (the installer will start them automatically after the upgrade is complete):
  - a. BSNEEScheduler
  - b. BSNEESubscriber
  - c. BSNEEDeviceScreenshotsProcessor
3. Ensure that there is at least 5GB of free space on the C: drive. The installer will also indicate an error if there is not enough space.

# INSTALLATION

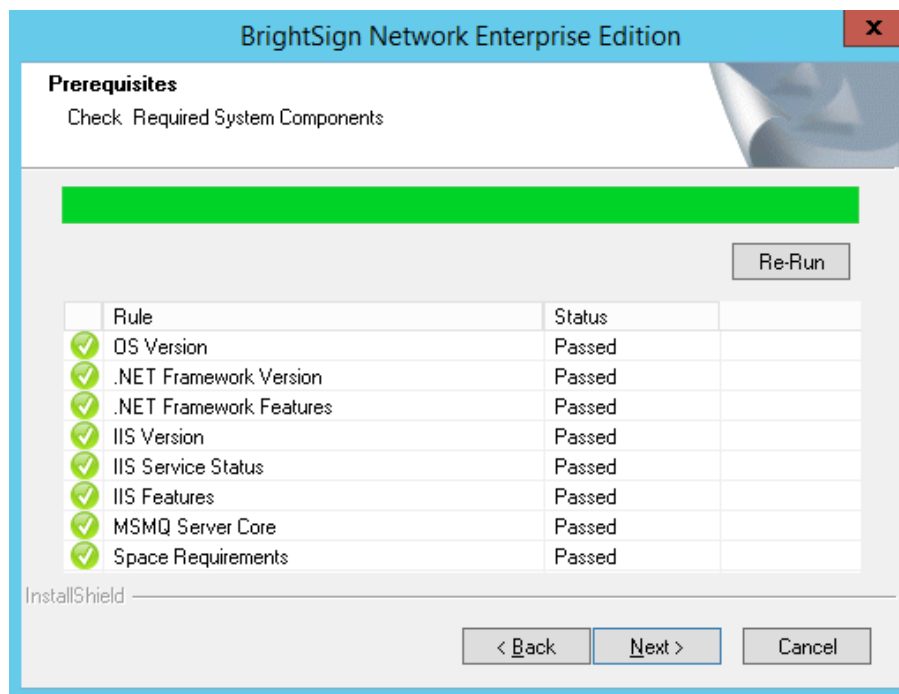
To start the upgrade process, click on the BSNEE Upgrade Installer software. The installer will extract the necessary files and prompt you to continue. Click **OK** to begin.

## Prerequisites

The installer will check to ensure that you have all necessary system components to upgrade to BSNEE version 4.2.

The installer will check the following conditions:

- ✓ Operating System version (OS)
- ✓ .NET Framework version (4.0 or later)
- ✓ .NET Framework features
- ✓ WMI services activity status
- ✓ IIS version (7.0 or later)
- ✓ IIS services status
- ✓ IIS components set up status (40 items total)
- ✓ Microsoft Messages Queue set up status
- ✓ Storage Space Requirements



Once the system check is finished, the installer will display a full list of components that are installed or that need to be installed. If an item does not pass the system check (as indicated by the *Failed* status), you can click the item to learn the reason for the failure and instructions for fixing the problem. After installing the missing component(s), click **Re-Run** to check the installation again.

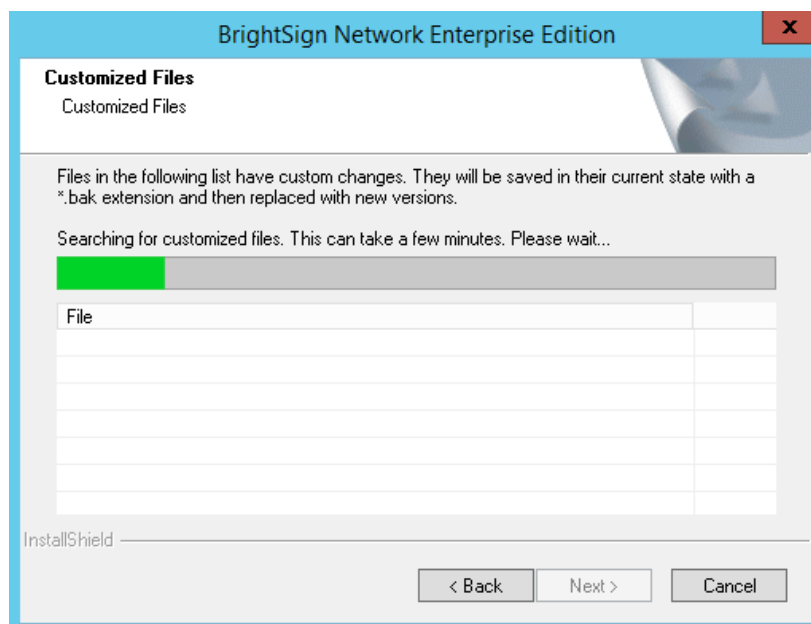
Once all components meet the requirements for installation, you will be able to click **Next** to continue.

## Customized Files

The installer will search for any customized WebUI files within the BSNEE installation. Once the list of customized files is populated, click **Next**. The customized files will be saved with *.bak* extensions and replaced with standard versions during the final installation step.

If you have any customized files, you will need to manually re-implement them after the installation process is complete.

**Note:** *Customized database schemata are not supported by the upgrade installer. Clicking **Next** will return an error message if your BSNEE install contains customized database schema.*

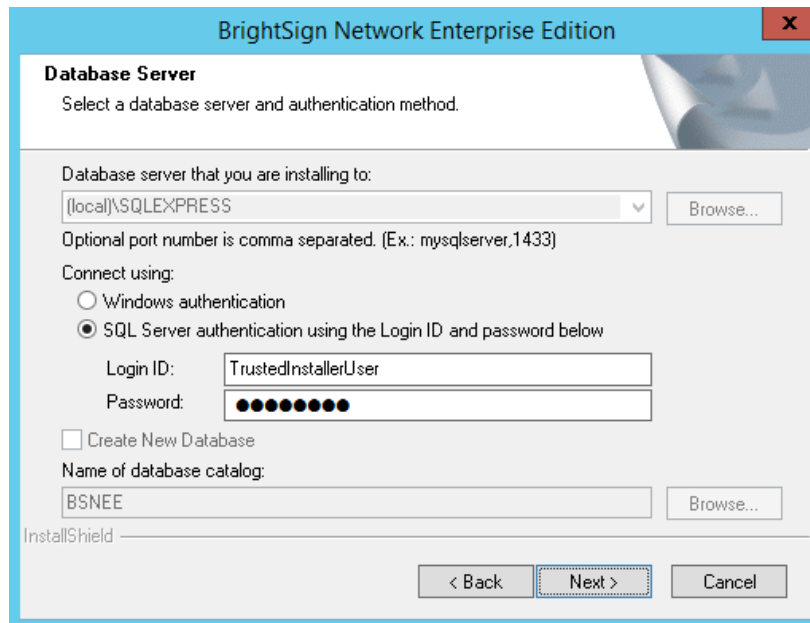




## Database Server

The **Database Server** step will only appear if you do not currently have access to the MS SQL Server where the BSNEE database is located. If this step does not appear after the **Customized Files** step, you can move on to the **Backup Database** step.

If you do not have authorization to modify the BSNEE database, you will need to enter valid **SQL Server** credentials.



BrightSign Network Enterprise Edition

**Database Server**  
Select a database server and authentication method.

Database server that you are installing to:  
(local)\SQLEXPRESS Browse...

Optional port number is comma separated. (Ex.: mysqlserver,1433)

Connect using:  
 Windows authentication  
 SQL Server authentication using the Login ID and password below

Login ID: TrustedInstallerUser  
Password: ●●●●●●●●

Create New Database  
Name of database catalog:  
BSNEE Browse...

InstallShield

< Back Next > Cancel

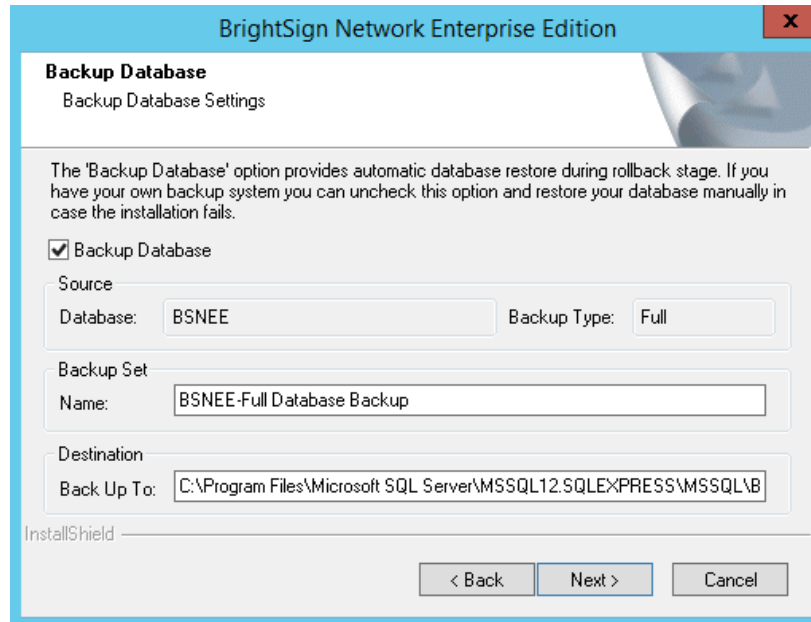
## Backup Database

Check the **Backup Database** box to enable automatic rollback of the BSNEE database in case the upgrade process fails during installation. If the upgrade installation process is completed successfully, you will not be able to use this option to recover the previous BSNEE install. You should leave this box checked unless you have other means for backing up the database.

The **Backup Set** and **Destination** fields are automatically populated using information from the MS SQL server. You can modify them if necessary:

- **Backup Set:** Specify the **Name** of the backup file set.
- **Destination:** Specify the destination path of the backup file set on the MS SQL server. You can specify a path on a remote MS SQL server as well.

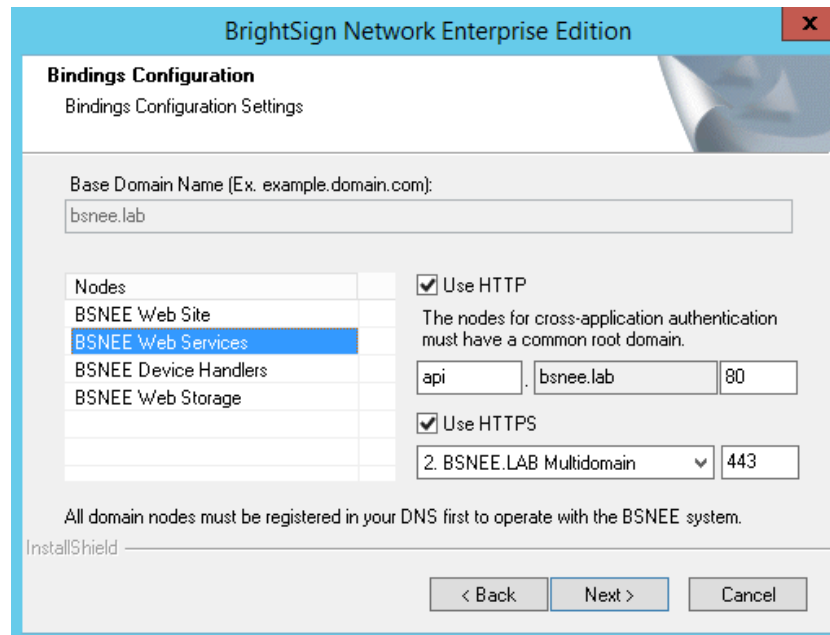
Click **Next** to confirm the backup parameters you have chosen.



## Bindings Configuration

The Base Domain Name must remain the same during the BSNEE upgrade process. Select each node to change the bindings for that node.

Node names are populated using the existing BSNEE configuration files. The node names are editable, but we do not recommend changing them unless it is absolutely necessary. If the name of the **Device Handlers** node is changed, all players connecting to the BSNEE account will need to be set up again.



Check the **Use HTTP** and/or **Use HTTPS** boxes if you would like to enable these protocols for a node. You can also change the port numbers of each node.

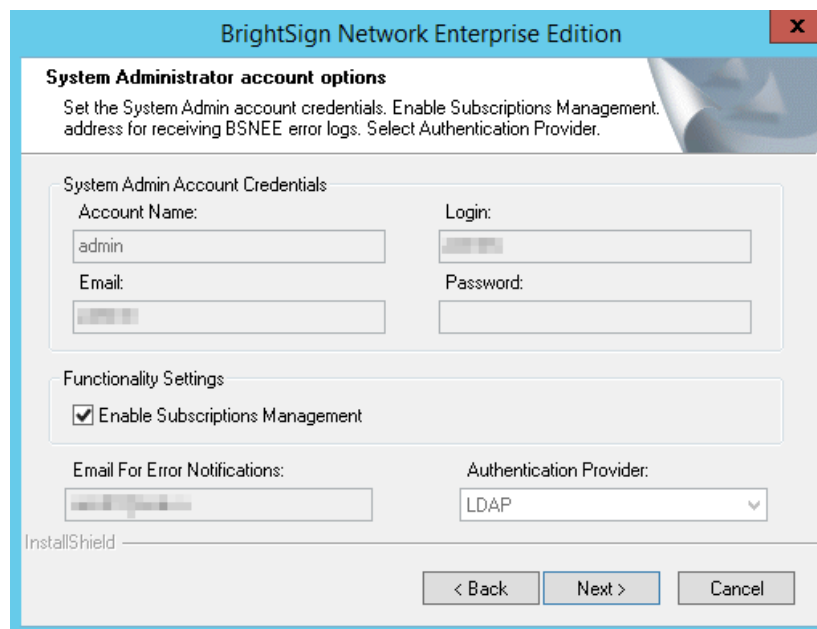
**Note:** *Changing the HTTP port or adding HTTPS binding for the Device Handlers node will require devices to be set up again to use HTTPS. Also, devices will not work with self-signed certificates if these options are selected.*

If you plan on using HTTPS, you should use the Microsoft Management Console (MMC) to ensure that you have appropriate permissions for the private key of the certificate. By default, read access is required for the “IIS\_IUSRS” group (for more information, see **Pre-Installation > Persistent Root and Temporary Storage Folders** in the BSNEE Installation Guide).

Click the **Next** button when you have completed the bindings configuration.

## Account Settings

Check the **Enable Subscriptions Management** box if you wish to maintain the subscription system for devices on your BSNEE instance. Unchecking this box will give all devices on the network permanent Grace subscriptions and will disable all scheduler and UI functions associated with subscriptions.



The screenshot shows a dialog box titled "BrightSign Network Enterprise Edition" with a close button (X) in the top right corner. The main heading is "System Administrator account options". Below the heading is a descriptive text: "Set the System Admin account credentials. Enable Subscriptions Management. address for receiving BSNEE error logs. Select Authentication Provider." The dialog is divided into three sections: "System Admin Account Credentials" with fields for Account Name (admin), Login, Email, and Password; "Functionality Settings" with a checked checkbox for "Enable Subscriptions Management"; and "Email For Error Notifications" and "Authentication Provider" (set to LDAP). At the bottom, there is an "InstallShield" label and three buttons: "< Back", "Next >", and "Cancel".

# POST-INSTALLATION

## Configuring BrightAuthor

BrightAuthor installations will need to be configured to connect to the BSNEE instance. BrightAuthor install files can be configured using the latest version BrightAuthor Configurator, which is available on the [Software Downloads](#) page.

If you were previously using BSNEE 3.3, and did not change any node names during the update process, follow these steps while running the Configurator:

1. Enter the **Base Domain Name** for the BSNEE instance.
2. Check the **Advanced Configuration** box.
3. For the **Application Services** node, use a “fileservices” domain instead of an “api” domain (e.g. “fileservices.mydomain.com”).
4. For the **Device Handlers** node, use a “services” domain instead of a “handlers” domain (e.g. “services.mydomain.com”).
5. For the **Storage** node, enter the same BSNEE Persistent Storage URL that was used previously.
6. Enter the **WS-\* Endpoint DNS Identity (CN)**: This value must match the CN of the certificate that was assigned to the Web Services node.