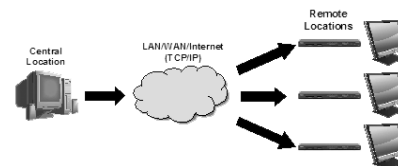


New Features

- **Enabled Networking**

Allows you to update content and software remotely and securely, using software version 2.0.94 or later.

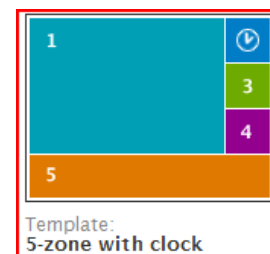
- **Simple Networking** – automatically download content from a folder on a web server, locally or over the Internet.
- **Managed Networking** - using a Brightsign Network Manager account, you can organize and manage content, grouping units together, creating presentations, and scheduling presentations to be deployed. Includes SSL support.
- **RSS & Time** – Supports playback of RSS feeds, and updating time over the Internet.
- **Network Control** – Send/Receive commands via UDP



- **Added Zones & Widgets**

Now, you can divide your screen into multiple, distinct content zones to playback videos, images, text and RSS feeds. Each zone has its own distinct playlist, and the layout and number of zones are configurable. This feature requires software version 2.0.94 or later

- **Videos** – 1 zone that plays both videos and images
- **Images** – Multiple zones to display images
- **Text** – Enter text you want displayed onscreen
- **RSS** – Enter a URL for the Brightsign to display
- **Clock** – Display 12 or 24-hr clock or Date
- Also allows control of background color, background image, font, text color and supports transitions.



- **Transitions** – Supports PowerPoint style transition effects between images.
- **WXGA** – Added 1360x768 VGA resolution

Note: There are some cases where your display may flicker when using 1360x768. To learn more about the above new features, please read the *BrightSign User Guide*.

Additional Improvements and Bug Fixes

- Many Additions and Improvements to BrightScript Language, including:
 - roRectangle – Play content inside a window
 - roTextWidget – Display text onscreen in a window. For example, allows support for subtitles
 - roURLTransfer – reading and writing from servers using URLs
 - roBrightPackage – Content updates from encrypted USB thumb drive
- roTouchScreen.EnableCursor now always enables cursor as it did under 1.3.x software. Allows you to show the cursor, even if there's no mouse present.
- Miscellaneous bug fixes and improvements

If you have any questions, please contact support@brightsign.biz.